



Gentaur

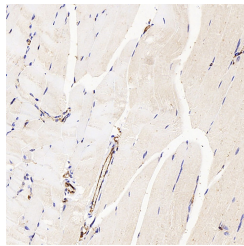
CD31 Polyclonal Antibody

Catalog No. E-AB-70021
Storage Store at -20°C. Avoid freeze / thaw cycles.
Applications IHC

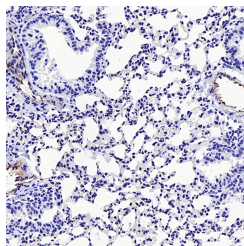
Reactivity M
Host Rabbit
Isotype IgG

Note: Centrifuge before opening to ensure complete recovery of vial contents.

Images



Immunohistochemistry analysis of paraffin-embedded mouse skeletal muscle using CD31 Polyclonal Antibody at dilution of 1:300.



Immunohistochemistry analysis of paraffin-embedded mouse lung cancer using CD31 Polyclonal Antibody at dilution of 1:300.

Immunogen Information

Immunogen KLH conjugated Synthetic peptide corresponding to Mouse CD31
Swissprot Q08481
Synonyms CD31 Antigen;EndoCAM; PECAM-1;GPIIA;PECA1

Product Information

Buffer PBS with 0.02% sodium azide, 1% protective protein and 50% glycerol, pH7.4
Purify Affinity purification
Dilution IHC 1:200-1:500

Background

Platelet endothelial cell adhesion molecule-1 (PECAM-1,CD31) is a member of the immunoglobulin gene superfamily of cell adhesion molecules. It is highly expressed on the surface of the endothelium,making up a large portion of its intracellular junctions. PECAM-1 is also present on the surface of hematopoietic cells and immune cells including platelets,monocytes,neutrophils,natural killer cells,megakaryocytes and some types of T-cell . As well as its role in cell-cell adhesion,PECAM-1 functions as a signaling receptor,and is involved in important physiological events such as nitric oxide production,regulation of T-cell immunity and tolerance,leukocyte transendothelial migration and inflammation and angiogenesis .

For Research Use Only

Gentaur Molecular Products BVBA

Address: Voortstraat 49, 1910 Kampenhout, Belgium

T: 0032 16 58 90 45 | **E:** info@gentaur.com

Websites: www.gentaur.com | www.maxanim.com